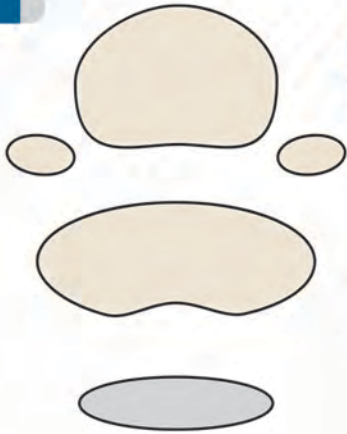


2021-22

PRODUCT CATALOG



CROWN SEATING

WORK AND LIVE IN COMFORT



ENGINEERING THAT FITS
THE HUMAN BODY

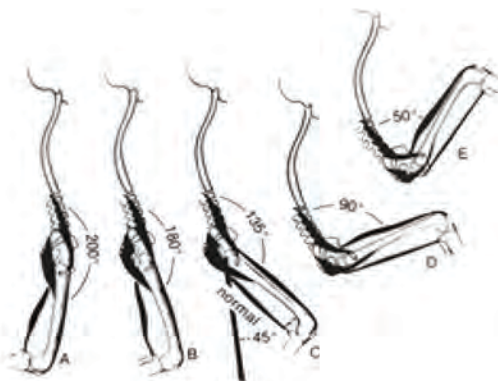
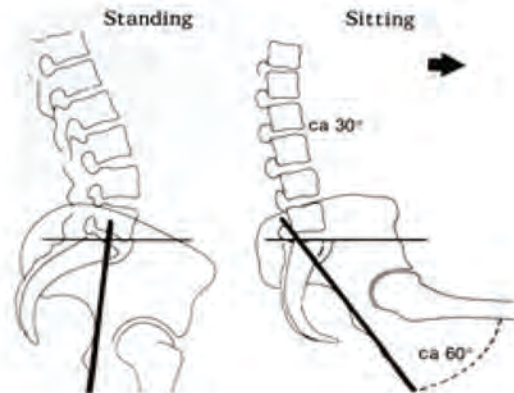


Address: 7300 S Tucson Way, Centennial, CO 80112, USA

Phone: 800.417.4122 | Fax: 303.693.2257 | Email: info@crowns seating.com

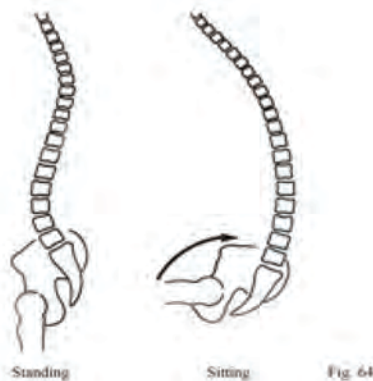
ERGONOMICS

We firmly believe that ergonomics is not just some buzzword to be used in marketing brochures but is the founding principal of all of our research and design projects. We outpace our competition by multiples of ten when researching human/ machine interaction when the user has to sit and lean forward to complete a task.



Almost 40 years ago, ergonomic researchers determined that the load placed on the inter-vertebral discs in the lower back increased over 40% when a person went from a standing position to an upright sitting position.

As someone begins to move into a sitting position, they raise their thigh into a position where the backside of the knee is at a 90-degree angle, forcing the pelvis to rotate backward and turn the tailbone under. This positioning of the pelvis, relative to the spine, starts stacking the intervertebral discs to places increased pressure on the discs. These nerves radiate from the spinal cord outward to the lower part of the body connective tissues in the lower back. This increased pressure has a significant potential to lead to cumulative trauma disorder, more commonly referred to as "back pain."



Know The Basics

Try not to sit for an extended amount of time.

Get up and stretch.

Be conscious of your posture!

The human body was designed to move.

Keep it moving.

Always make sure, while working, that your hips are above your knees.



DESIGN

We believe that "humaneering," engineering that fits the human body rather than designing just to have something new, is critical to moving the benchmark higher when creating new components and stool designs.

Our kaizen process, the continuous improvement of our products, keeps us many steps ahead of our competition, allowing us to provide a more significant ROI to our distributor partners and more value for our customers.



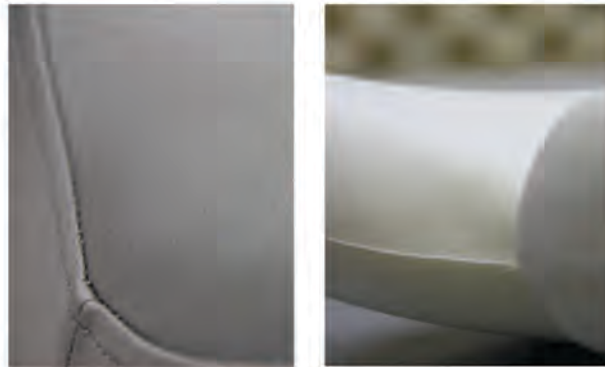
Design refers to the planning that is the foundation of making things. There are different design philosophies, approaches, and methods. The design strikes a balance between several various components, and depending on the situation, it can give more weight to one or another. For example, one might focus on materials and ask what could be made with a specific collection of items.

On the other hand, one could concentrate on aesthetics and imagine the most beautiful object in a particular setting. Functional design can refer to a focus on function rather than aesthetics, a concern with objectives rather than components, or it can refer to using a complete requirements document to guide development and testing or to a manufacturing process. In addition, functional design is an integral part of our philosophy at Crown Seating.



TECHNOLOGY

We continually search for new, better technology to incorporate into our products, not only within our industry but also outside into non-related areas of progressive research. No other company can begin to match how many "firsts" Crown Seating has brought in design, material construction, and technological advancement to the dental industry.



For nearly 30 years, Crown Seating has been an industry leader in designing and manufacturing ergonomically correct office chairs and dental stools. Utilizing the highest quality materials and craftsmanship, Crown Seating manufactures a wide variety of styles, at many different price levels, for professionals across multiple industries.



We continue our search to find relevant technologies and apply them to our products.

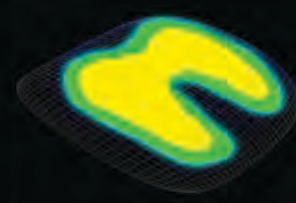
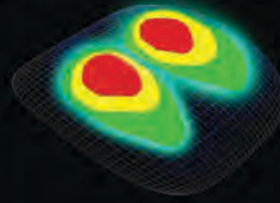
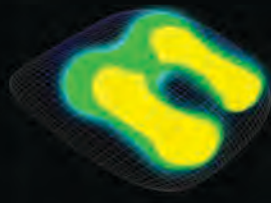
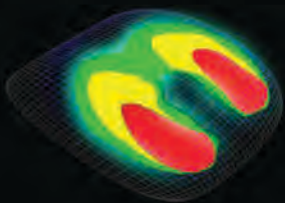
Let's look at our virtù™ chair, for example. A traditional chair creates unhealthy pressure points from the hip bones, the tailbone, and the legs, which increase as you lean forward to work. The virtù™ chair's support system rolls with you as you move back and forth, providing improved support without any severe pressure on your body. The unique flexing properties of the high-strength fiber-reinforced frame, combined with the precise variable tensioning of the mesh support system, allows weight and its corresponding pressure points to be optimally dispersed regardless of the position of the body.

Traditional Seating

Virtù®

Traditional Seating

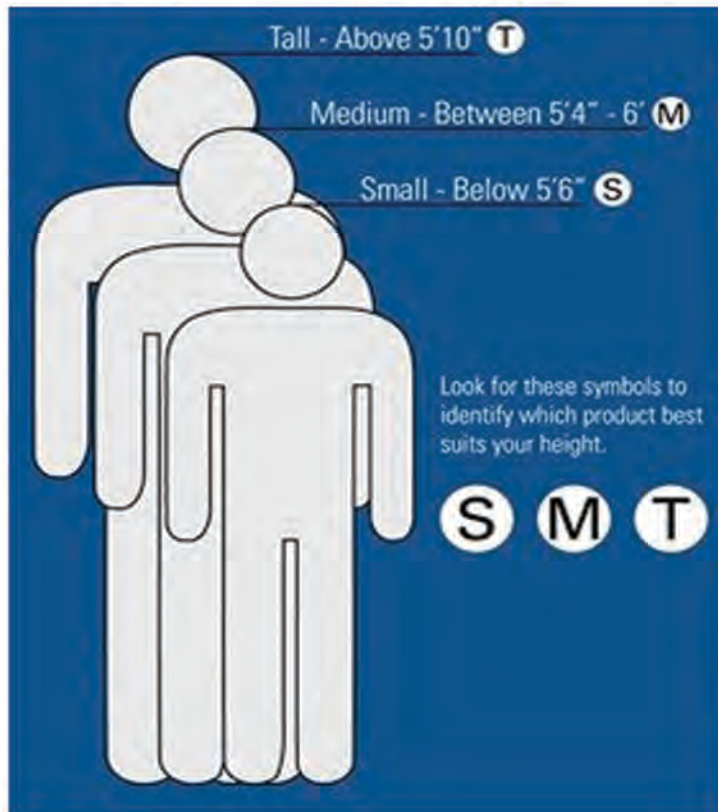
Virtù®



THE GOLDILOCK THEORY

Too short, too tall, too wide, too deep, too hard, too soft...

All of these situations can cause discomfort, skeletal misalignment and often times, cumulative trauma disorder. The notion that "one size fits all" has become outdated as ergonomic research has proven that sitting on a stool or chair that doesn't fit the particular user's size can diminish their quality of life, shorten their working career, and diminish their work quality. The "Goldilocks Principle" declares that "one size does not fit all" and that optimal quality (of both output and life) can only be achieved with a proper fitting stool.



We pioneered the concept of the "Goldilocks Philosophy" to encourage everyone to understand that "one size does not fit all."

Just as everyone cannot wear the same size pants, nor can they use the same size seating stool, a stool. Maximum performance, as well as maximizing your health, requires a size which fits you for your height, weight, body type, and specialized function.

SILVERTON C150D

The Silverton saddle was designed with everybody in mind, not just a specific body type. Softer foam combined with strategic placement of that foam allows saddle seating experience like never before.

New advancements in foam technologies and placement allow the Silverton to distribute weight evenly effectively. The Silverton provides support that promotes proper posture during both resting and working activities, helps minimize fatigue, reduces chronic back, neck, and arm pain, and increases circulation to the legs.



Specifications

- Weight: 28 lbs
- Stool Base Diameter: 23"
- Floor Seat Height: 25" - 31.5"
- Seat Measurements: Width 13" x Depth 16"

Standard Features

- Dual-lever seat plate adjustment with 15 degrees of tilt.
- Light weight design
- Saddle style seat with Serene gel foam
- Cylinder: Tall
- Base: Beige Powder Coated Metal
- Casters: Hard floor

Benefits

- Full tilt adjustment allows the user to sit comfortably while working.
- A distinct anatomically designed seat conforms to the natural shape of the body.
- Technologically advanced Serene gel foam provides excellent support and comfort.
- Multi-angle pelvic positioning helps reduce lower back strain.
- Improved balance point allows you to bend forward and reach further with less strain.
- Small seat size allows the closest positioning to the patient.

SILVERTON C150A

Specifications

- Weight: 34 lbs
- Stool Base Diameter: 23"
- Floor Seat Height: 25" - 31.5"
- Seat Measurements: Width 13" x Depth 16"
- Foot Ring: Adjustable
- Arm: Ratchet arm adjusts vertically and horizontal



Designed with every BODY in mind.



QUEEN ANNE CHAIR (QAC)

Standard Features

- Stool: Dual Lever Adjustment
- Seat: English Style Saddle
- Cylinder: Tall
- Base: Polished Top
- Casters: Black Hard Floor
- Cushioning: Serene Gel Foam
- Upholstery: Medical Grade Vinyl
- Colors: Carbon Silververtex Only

Specifications

- Weight: 28 lbs
- Stool Base Diameter: 23"
- Floor To Seat Height: 22.5" - 27.5"
- Seat Measurements: Width 16" x Depth 13"



Benefits

- Distinct anatomically contoured seat design allows for a custom fit.
- Multi-angle pelvic positioning helps reduce lower back strain.
- Improved balance point allows you to bend forward and reach further with less strain.
- Small seat size allows the closest positioning to the patient.
- Carpet or hard floor casters glide easily in any environment.
- Five-leg aluminum base provides better stability.
- The choice of different height lift mechanisms provides a wide range of adjustments.

English style saddle stool recommended for users of all sizes

S M T

DENVER C130DB

Standard Features

- Stool: Dual Lever Adjustment
- Seat: Ergo Angle Style Saddle
- Cylinder: Tall
- Base: Beige Powder Coated Metal
- Casters: Hard floor
- Cushioning: Serene Gel Foam
- Upholstery: Medical grade vinyl



Specifications

- Weight: 34 lbs
- Stool Base Diameter: 23"
- Floor - Seat Height: 21" - 26"
- Seat Measurements: Diameter 16" x 11"

Benefits

- A distinct anatomically designed seat conforms to the natural shape of the body.
- Technologically Serene Gel Foam provides excellent support and comfort.
- Seat Groove prevents undue pressure on the tailbone.
- Multi-angle pelvic positioning helps reduce lower back strain.
- Improved balance point allows you to bend forward and reach further with less strain.
- Small seat size allows the closest positioning to the patient.
- Five-leg powder-coated aluminum base provides improved stability.
- The choice of different height lift mechanisms provides a wide range of adjustments.

DENVER C130D

Specifications

Weight: 27 lbs
Stool Base Diameter: 23"
Floor To Seat Height: 21" - 26"
Seat Measurements: Diameter 16" x 11"



DENVER C130A

Standard Features

- Stool: Dual Lever Adjustment
- Seat: Ergo Angle Style Saddle
- Backrest: Lumbar
- Cylinder: Tall
- Base: Beige Powder Coated Metal
- Casters: Hard Floor
- Upholstery: Medical grade vinyl
- Cushioning: Serene Gel Foam



Specifications

- Weight: 36 lbs
- Stool Base Diameter: 23"
- Floor To Seat Height: 19.25" - 26.25"
- Seat Measurements: Width 16" x Depth 11"

Benefits

- A distinct anatomically designed seat conforms to the natural shape of the body.
- Technologically advanced Serene Gel Foam provides excellent support and comfort.
- Seat Groove prevents undue pressure on the tailbone.
- Multi-angle pelvic positioning helps reduce lower back strain.
- Improved balance point allows you to bend forward and reach further with less strain.
- Small seat size allows the closest positioning to the patient.
- The ratchet arm adjusts vertically and horizontally to allow the user to operate comfortably.
- Five-leg powder-coated aluminum base provides improved stability.
- The choice of different height lift mechanisms provides a wide range of adjustments.

DENVER C130AB

Specifications

- Weight: 40 lbs
- Stool Base Diameter: 23"
- Floor - Seat Height: 21" - 26"
- Seat Measurements: Diameter 16" x 11"

Features

- Arm: Ratcheting
- Cylinder: Tall
- Foot-ring: Adjustable
- Stool: Triple Lever Adjustment



Assistant stool recommended for users of all sizes

S M T

DURANGO C90SS

Standard Features

- Stool: Dual Lever Adjustment
- Seat: English Style Saddle
- Cylinder: Medium
- Base: Polished Metal
- Casters: Hard Floor
- Cushioning: Serene Gel Foam
- Upholstery: Medical Grade Vinyl



Specifications

- Weight: 28 lbs
- Stool Base Diameter: 23"
- Floor Seat Height: 22.5" - 27.5"
- Seat Measurements: Width 16" x Depth 13"



Benefits

- Distinct anatomically contoured seat design allows for a custom fit.
- Multi-angle pelvic positioning helps reduce lower back strain.
- Improved balance point allows you to bend forward and reach further with less strain.
- Small seat size allows the closest positioning to the patient.
- Hard floor casters glide easily in any environment.
- Five-leg powder-coated aluminum base provides better stability.
- The choice of different height lift mechanisms provides a wide range of adjustments.

English style saddle stool recommended for users of all sizes

S M T

DURANGO C90SSB

Standard Features

- Stool: Triple Lever Adjustment
- Seat: English Style Saddle
- Cylinder: Medium
- Base: Beige Powder Coated Metal
- Casters: Hard floor
- Cushioning: Serene Gel Foam
- Upholstery: Medical grade Vinyl



Specifications

- Weight: 45 lbs
- Stool Base Diameter: 23"
- Floor Seat Height: 22.5" - 27.5"
- Seat Measurements: Width 16" x Depth 13"

DURANGO C90SSA



Specifications

- Weight: 33 lbs
- Stool Base Diameter: 23"
- Floor Seat Height: 26" - 32.5"
- Seat Measurements: Width 16" x Depth 13"

Standard Features

- Arm: Ratcheting
- Back: Optional With C90SSB
- Cylinder: Tall
- Foot ring: Adjustable or Removable
- Stool: Dual Lever Adjustment

English Style / Assistant stool recommended for users of all sizes

S M T

DURANGO C90SSAB

Standard Features

- Stool: Triple Lever Adjustment
- Seat: English Style Saddle
- Lumbar Backrest
- Ratcheting Arm
- Cylinder: Tall
- Base: Beige Powder Coated Metal
- Casters: Hard floor
- Cushioning: Serene Gel Foam
- Upholstery: Medical Grade Vinyl



Specifications

- Weight: 28 lbs
- Stool Base Diameter: 23"
- Floor Seat Height: 22.5" - 27.5"
- Seat Measurements: Width 16" x Depth 13"

Benefits

- Distinct anatomically contoured seat design allows for a custom fit.
- Multi-angle pelvic positioning helps reduce lower back strain.
- Improved balance point allows you to bend forward and reach further with less strain.
- Small seat size allows the closest positioning to the patient.
- Hard floor casters glide easily in any environment.
- Five-leg powder-coated aluminum base provides better stability.
- The choice of different height lift mechanisms provides a wide range of adjustments.



English Style / Assistant stool recommended for users of all sizes

S M T

DURANGO C90SB

Standard Features

- Stool: Dual Lever Adjustment
- Seat: Western Style Saddle
- Cylinder: Tall
- Base: Beige Powder Coated Metal
- Casters: Hard Floor
- Cushioning: Serene Gel Foam
- Upholstery: Medical Grade Vinyl



Specifications

- Weight: 28 lbs
- Stool Base Diameter: 23"
- Floor Seat Height: 25" - 31.5"
- Seat Measurements: Width 13" x Depth 16"

DURANGO C90SBB



Standard Features

- Stool: Triple Lever Adjustment
- Seat: Western Style Saddle
- Lumbar Backrest
- Cylinder: Tall
- Base: Metal
- Casters: Hard Floor
- Cushioning: Serene Gel Foam
- Upholstery: Medical Grade Vinyl

Specifications

- Weight: 33 lbs
- Stool Base Diameter: 23"
- Floor Seat Height: 22.5" - 27.5"
- Seat Measurements: Width 16" x Depth 13"

Western style saddle stool recommended for users of all sizes



DURANGO C90SBA

Standard Features

- Stool: Dual Lever Adjustment
- Seat: Western Style Saddle
- Ratcheting Arm
- Lumbar Backrest
- Cylinder: Tall
- Base: Metal
- Casters: Hard floor
- Cushioning: Serene Gel Foam
- Upholstery: Medical Grade Vinyl



Specifications

- Weight: 28 lbs
- Stool Base Diameter: 23"
- Floor Seat Height: 25" – 31.5"
- Seat Measurements: Width 13" x Depth 16"

DURANGO C90SBAB



Standard Features

- Stool: Triple Lever Adjustment
- Seat: Western Style Saddle
- Back: Lumbar
- Ratcheting Arm
- Lumbar Backrest
- Cylinder: Tall
- Base: Metal
- Casters: Hard floor
- Cushioning: Serene Gel Foam
- Upholstery: Medical Grade Vinyl

Specifications

- Weight: 33 lbs
- Stool Base Diameter: 23"
- Floor Seat Height: 22.5" - 27.5"
- Seat Measurements: Width 13" x Depth 16"

CANYON C160D

Introducing a redesigned classic. More functions and a shape specifically designed to provide versatility. With our Crown Seating Canyon stool, you'll have the option to sit down comfortably and still reach your patient. The stool's split-seat design allows width and angle adjustments to be made for a more personalized fit.



Standard Features

- Dual lever seat plate adjustment with 15 degrees of tilt.
- Light weight design
- Split Saddle style seat
- Tall cylinder
- Beige powder coated metal base
- Beige carpet casters
- Serene Gel Foam

Specifications

- Weight: 28 lbs
- Stool Base Diameter: 23"
- Floor Seat Height: 25" - 31.5"
- Seat Measurements: Width 13" x Depth 16"



Benefits

- Full tilt adjustment allows the user to sit comfortably while working.
- A distinct anatomically designed seat conforms to the natural shape of the body.
- Serene gel foam provides excellent support and comfort.
- Multi-angle pelvic positioning helps reduce lower back strain.
- Improved balance point allows you to bend forward and reach further with less strain.
- Small seat size allows the closest positioning to the patient.



Canyon split seat saddle designed with every BODY in mind.



COLORADO C170

Standard Features

- Stool: Dual Lever Adjustment
- Seat: Saddle
- Cylinder: Tall
- Base: Polished Top
- Casters: Black Hard Floor
- Cushioning: High Resiliency Foam
- Upholstery: Medical Grade Vinyl



Specifications

- Weight: 28 lbs
- Stool Base Diameter: 23"
- Floor Seat Height: 22.5" - 27.5"
- Seat Measurements: Width 16" x Depth 13"

COLORADO C170DBA



Benefits

- Cradle design that holds your body in place as you work.
- Lightweight design
- Medical grade vinyl
- High resiliency foam

Standard Features

- Stool: Dual Lever Adjustment
- Seat: Saddle
- Cylinder: Tall
- Base: Polished Top
- Casters: Black Hard Floor
- Cushioning: High Resiliency Foam
- Upholstery: Medical Grade Vinyl

Specifications

- Weight: 33 lbs
- Stool Base Diameter: 23"
- Floor - Seat Height: 16.5" - 24"
- Seat Measurements: Diameter 16"

Assistant stool recommended for users between 5'4" - 6'



VIRTÙ®

A traditional chair creates unhealthy pressure points from the hip bones, the tailbone and the legs which increase as you lean forward to work.

The **virtù® chair's** support system rolls with you as you move back and forth, providing improved support without any harsh pressure on your body. The unique flexing properties of the high-strength fiber-reinforced frame, combined with the precise variable tensioning of the mesh support system, allows weight and its corresponding pressure points to be optimally dispersed regardless of the position of the body.



LIKE FLOATING ON WATER

The patented ZenWave™ motion technology allows you to float forward and backward without harmful pressure.

ALIGN YOUR SPINE

The Active Tilt™ seat plate pivots smoothly forward and backward to promote proper body alignment.

FEEL SUPPORTED

The "Free-Float" backrest stays with you as you lean forward, giving you continuous support.

EVERYONE IS DIFFERENT

virtù® fits you. Customize your seat and backrest position simply with three lever adjustments.

SORE BACK?

The convex shape of the "Free-Float" backrest massages and improves blood flow to your lower back.

BREATHE EASY

The cool breathable mesh prevents perspiration buildup and keeps your clothes looking fresh and clean.

Designer: Steven R. Knight

After years of racing on the Le Mans circuit and experiencing the pain of numerous accidents and broken bones, I was determined to find an answer to the pain I was experiencing as I worked in a forward, seated position. Owning a company that designs sophisticated, truly ergonomic stools for the dental industry gave me the resources and research necessary to design a solution to my back pain. The virtù™ chair was designed with the advanced mechanics and materials to perform in a manner that actually improves the health of an operator's back. The patented ZenWave™ motion provides binding, stress-free support as the operator leans forward, allowing the pelvis to rotate forward in a natural position, and protect the lower back from further injury.

VIRTÙ® C1200M



Specifications

- Weight: 42 lbs
- Stool Base Diameter: 24"
- Floor Seat Height: 20" - 25"
- Seat Measurements: Width 18.5" x Depth 17"

VIRTÙ® C1200ML (LARGE SEAT)



Specifications

- Weight: 48 lbs
- Stool Base Diameter: 24"
- Floor Seat Height: 20" - 25"
- Seat Measurements: Width 20.25" x Depth 19.5"

VIRTÙ® C120DM



Specifications

- Weight: 42 lbs
- Stool Base Diameter: 24"
- Floor Seat Height: 20" - 25"
- Seat Measurements: Width 18.5" x Depth 17"

VIRTÙ® C120DML (LARGE SEAT)



Specifications

- Weight: 48 lbs
- Stool Base Diameter: 24"
- Floor Seat Height: 20" - 25"
- Seat Measurements: Width 20.25" x Depth 19.5"

Mesh office chair recommended for users of all sizes

S M T

VIRTÙ® C120AM



Specifications

- Weight: 60 lbs
- Stool Base Diameter: 23"
- Floor Seat Height: 24.5" - 31"
- Seat Measurements: Width 18.5" x Depth 17"

VIRTÙ® C120DA ARCTIC



Specifications

- Weight: 48 lbs
- Stool Base Diameter: 24"
- Floor Seat Height: 20" - 25"
- Seat Measurements: Width 18.5" x Depth 17"

Mesh office chair recommended for users of all sizes

S M T

VIRTÙ® C120AA ARCTIC



Specifications

- Weight: 60 lbs
- Stool Base Diameter: 23"
- Floor Seat Height: 24.5" - 31"
- Seat Measurements: Width 18.5" x Depth 17"

VIRTÙ® STEALTH



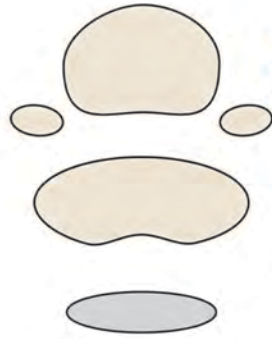
The revolutionary Stealth™ chair was designed for professional music, lighting, and video engineers who sit at the height of a regular desk, table, or console. Specifically produced in a non-reflecting Midnight Black color, the Stealth is perfect for FOH or side stage locations, as it will not reflect the spotlight or other light sources. In addition, it was designed with the advanced mechanics and materials to perform in a manner that improves the health of a music engineer's back. The patented ZenWave motion provides unbinding, stress-free support as the music engineer leans forward in a natural position and protects the lower back from further injury. Additionally, the scientifically designed backrest moves with the music engineer to massage the lumbar area of the spine, which increases blood flow and nutrients to the lower back muscles and intervertebral discs..

Specifications

- Dimensions: Width 18.5" x Depth 16.75"
- Floor to Seat Height: Studio Model: 19.5" - 25"
- Touring Model: 22.5" - 30"
- Weight: 57 lbs
- Color: Midnight with black arms Non-Reflective

Mesh office chair recommended for users of all sizes

S M T



CROWN SEATING
WORK AND LIVE IN COMFORT

OPERATOR / ASSISTANT SEATING



AURORA C140D

Standard Features

- Stool: Triple Lever, Independent Adjustment
- Seat: Advanced Molded Contour
- Cylinder: Medium
- Base: Chrome Metal Base
- Casters: 65mm, Two Tone Grey, Hard Floor
- Cushioning: High Resilience Molded Foam
- Upholstery: Standard Vinyl

Specifications

- Weight: 36 lbs
- Stool Base Diameter: 23"
- Floor - Seat Height: 19.25" - 26.25"
- Seat Measurements: Width 16" x Depth 11"



Benefits

- A distinct anatomically designed seat conforms to the natural shape of the body.
- High Resilience Molded Foam provides excellent support and comfort.
- Full ABS covers for ease of cleaning.
- Multi-angle pelvic positioning helps reduce lower back strain.
- The seat shape provides exceptional support and functionality.
- Small seat size allows the closest positioning to the patient.
- Five-leg fully polished base provides improved stability.

AURORA C140A



Standard Features

- Stool: Triple Lever, Independent Adjustment
- Seat: Advanced Molded Contour
- Arm: Ratcheting
- Cylinder: Tall – Metal base
- Foot Ring: Adjustable
- Base: Chrome Base
- Casters: 65mm, Two-Tone Grey, Hard Floor
- Cushioning: High Resilience Molded Foam
- Upholstery: Medical Grade Vinyl

Specifications

- Weight: 46 lbs
- Stool Base Diameter: 23"
- Floor – Seat Height: 19.25" – 26.25"
- Seat Measurements: Width 16" x Depth 15"

Modern Assistant stool recommended for users of all sizes

S M T

KEYSTONE C40D

Standard Features

- Stool: Triple Lever Adjustment
- Back: Oval Back
- Seat: Contoured
- Cylinder: Short
- Base: Metal
- Casters: Hard floor
- Cushioning: High Resilience Molded Foam
- Upholstery: Medical Grade vinyl



Operator stool recommended for users above 5'6" S M

Specifications

- Weight: 34 lbs
- Stool Base Diameter: 23"
- Floor - Seat Height: 17.5" - 22.5"
- Back: Width 15" x Height 12"
- Seat Measurements: Width 18.5" x Depth 16.5"

Benefits

- Full tilt adjustment allows the user to sit comfortably while working.
- Oval Backrest allows better torso maneuverability.
- Contoured, deep seat is perfect for medium to tall users.
- Superior cushioning creates unparalleled comfort.
- Carpet or hard floor casters glide easily in any environment.
- Five-leg powder-coated aluminum base provides improved stability.
- The choice of different height lift mechanisms provides a wide range of adjustment.

KEYSTONE C40AR



Standard Features

- Stool: Single Lever Adjustment
- Seat: Round
- Arm: Ratcheting
- Cylinder: Tall
- Foot Ring: Adjustable
- Base: Metal
- Casters: Hard floor
- Cushioning: High Resilience Molded Foam
- Upholstery: Medical Grade Vinyl

Specifications

- Weight: 35 lbs
- Stool Base Diameter: 23"
- Floor Seat Height: 23" - 30"
- Seat Measurements: Diameter 15"

Assistant stool recommended for users above 5'4" S M

TELLURIDE C50ABT

Standard Features

- Stool: Triple Lever Adjustment
- Back: Lumbar
- Seat: Oval
- Arm: Ratcheting Arm
- Cylinder: Tall
- Foot Ring: Adjustable
- Base: Beige Powder Coated Metal
- Casters: Hardfloor
- Cushioning: High Resiliency Foam
- Upholstery: Medical Grade Vinyl



Specifications

- Weight: 44 lbs
- Stool Base Diameter: 23"
- Floor - Seat Height: 24.5" - 31"
- Back: Width 15" x Height 8"
- Seat Measurements: Width 18.5" x Depth 14.5"

Benefits

- The revolutionary seat pan mechanism allows the backrest to massage user's lower back.
- Ideal for medium to short users.
- Triple lever adjustment allows users to operate in better health and comfort through maximum adjustability.
- The unique curve of the lumbar backrest supports the lower spine for superior back health.
- ABS shrouds provide easy cleaning surfaces.
- Oval seat shape prevents "perching" on the front edge and facilitates better back support.
- With the control lever in the "Free-Float" position, the seat and the backrest will follow you as you lean forward and back on the stool.

CRESTONE C20D

Standard Features

- Stool: Single Lever Adjustment
- Back: D-Shaped
- Seat: Round
- Cylinder: Short
- Base: Beige Composite Base
- Casters: Hard Floor
- Cushioning: High Resiliency Foam
- Upholstery: Medical Grade Vinyl



Specifications

- Weight: 27 lbs
- Stool Base Diameter: 23"
- Floor - Seat Height: 14" - 19"
- Seat Measurements: Diameter 15"

Benefits

- Comfort and style at a low cost.
- Limited features simplify adjustment.
- A round seat with high resiliency foam provides exceptional comfort.
- Small Backrest allows for better torso maneuverability.
- In addition, the round seat provides more freedom to move.
- Superior foam provides exceptional comfort.
- Hard floor casters glide easily in any environment.
- In addition, a Five-leg composite base provides improved stability.



CRESTONE C20A



Standard Features

- Arm: T-Stem to allow user to operate comfortably.
- Back: Included
- Cylinder: Tall
- Foot ring: Fixed

Specifications

- Weight: 33 lbs
- Stool Base Diameter: 23"
- Floor - Seat Height: 16.5" - 24"
- Seat Measurements: Diameter 15"

Operator/Assistant stool recommended for users between 5'4" - 6' **S** **M**

VAIL C30HS

Standard Features

- Stool: Dual Lever Adjustment
- Back: Lumbar
- Seat: Small Hybrid Saddle
- Cylinder: Medium
- Base: Beige Composite
- Casters: Hard Floor
- Cushioning: High resiliency foam
- Upholstery: Medical grade vinyl



Specifications

- Weight: 31 lbs
- Stool Base Diameter: 23"
- Floor - Seat Height: 16" - 21.5"
- Back: Width 15" x Height 9.5"
- Seat Measurements: Width 19.5" x Depth 13.5"

Benefits

- "Posture Perfect" Hybrid saddle seat creates unparalleled comfort.
- Full tilt adjustment allows the user to sit in comfort while working.
- Extra thick backrest provides superior lumbar support.
- Unique hybrid saddle allows better circulation in the lower leg.
- Short seat pan depth eliminates "perching" on the front of the seat.
- A Five-leg composite base provides improved stability.
- Choice of different height lift mechanisms provides a wide range of adjustments.

Operator stool recommended for users below 5'6"



STEAMBOAT C60D

Standard Features

- Stool: Triple Lever Adjustment
- Back: Half Moon Backrest
- Seat: Plush
- Cylinder: Short
- Base: Beige Powder Coated Metal
- Casters: Hard floor
- Cushioning: Multi-Layered Foam
- Upholstery: Medical grade vinyl



Specifications

- Weight: 34 lbs
- Stool Base Diameter: 23"
- Floor Seat Height: 19" - 24.5"
- Back: Width 16.5" x Depth 11"
- Seat Measurements: Width 19" x Depth 15.5"

Benefits

- The revolutionary seat pan mechanism allows the backrest to massage the user's lowerback.
- In addition, multiple layers of foam facilitate better upper body weight support and alleviate pressure under the legs.
- Triple lever adjustment allows user to operate in comfort through maximum adjustability.
- Full tilting seat and back promote a better and healthier posture.
- With the control lever in the "Free-Float" position, the seat and the backrest will follow you as you lean forward and back on the stool.
- ABS shrouds provide easy cleaning surfaces. The deep seat is ideal for tall/plus-size users.
- Hard floor casters glide easily in any environment.

STEAMBOAT C60ABT

Specifications

- Weight: 45 lbs
- Stool Base Diameter: 23"
- Floor Seat Height: 24" - 30.5"
- Back: Width 15" x Height 12"
- Seat Measurements: Width 19" x Depth 15.5"

Features

- Arm: Ratchet arm adjusts vertically and horizontally
- Back: Included
- Cylinder: Tall
- Foot ring: Adjustable
- Stool: Triple Lever Adjustment



Operator/Assistant stool recommended for users above 5'10"



ASPEN C70DS

Standard Features

- Stool: Triple lever adjustment
- Seat: Small hybrid saddle
- Cylinder: Short
- Base: Beige Powder Coated Metal
- Casters: Hard floor
- Cushioning: High resiliency foam
- Upholstery: Medical grade vinyl

Specifications

- Weight: 34 lbs
- Stool Base Diameter: 23"
- Floor Seat Height: 18" - 23.5"
- Back: Width 15" x Height 8"
- Seat Measurements: Width 19.5" x Depth 13.5"



Benefits

- The revolutionary seat pan mechanism allows the backrest to massage the user's lowerback.
- Ergonomic seats that are designed for shorter users.
- The unique curve of the lumbar backrest supports the lower spine for superior back health.
- Triple lever adjustment allows the user to operate in comfort through maximum adjustability.
- With the control lever in the "Free-Float" position, the seat and the backrest will follow you as you lean forward and back on the stool.
- ABS shrouds provide easy cleaning surfaces.
- Seat shape distributes weight to alleviate pressure on the legs.
- Five-leg powder-coated aluminum base provides improved stability.

ASPEN C70DL

Specifications

- Weight: 34 lbs
- Stool Base Diameter: 23"
- Floor Seat Height: 14.25" - 19.25"
- Seat Measurements: Width 21.5" x Depth 14.5"

Features

- Stool: Triple lever adjustment
- Seat: Large hybrid saddle
- Cylinder: Short
- Base: Beige Powder Coated Metal
- Casters: Hard floor caster
- Cushioning: High resiliency foam
- Upholstery: Medical grade vinyl



Operator stool recommended for users below 6'

S M

STERLING C85SD

Standard Features

- Stool: Triple lever adjustment
- Seat: Large hybrid saddle
- Cylinder: Short
- Base: Beige Powder Coated Metal
- Casters: Hard floor caster
- Cushioning: High resiliency foam
- Upholstery: Medical grade vinylt



Operator stool recommended for users below 6' 5" M

Specifications

- Weight: 37 lbs
- Stool Base Diameter: 23"
- Floor Seat Height: 16.5" - 21.5"
- Back: Width 11" x Depth 13.5"
- Seat Measurements: Width 17" x Depth 18"

Benefits

The seat and backrest are mounted on a heavy-duty mechanism, with individual gas-spring cylinders for independent seat and backrest control. The deeply contoured seat forces you to sit all the way back in the seat, ensuring that the sculptured backrest in firm contact with the lumbar region of your back. The unique design of the mechanism, seat, and backrest, allows a range of movement with the backrest at all times, maintaining contact and support of your back. With the control lever in the "Free-Float" position, the seat and the backrest will follow you as you lean forward and back on the stool. In addition, the waterfall front allows better circulation in the lower leg.

STERLING C85SA

Specifications

- Weight: 50 lbs
- Stool Base Diameter: 23"
- Floor Seat Height: 24" - 29.5"
- Back: Width 13.5" x Height 11"
- Seat Measurements: Width 18" x Depth 17"

Features

- Arm: Ratcheting
- Back: Included
- Cylinder: Tall
- Footring: Adjustable
- Stool: Single Lever Adjustment



GLENWOOD C35D

Standard Features

- Stool: Dual Lever Adjustment
- Back: None Or Oval Back
- Seat: Contoured
- Cylinder: Short
- Base: Beige Powder Coated Metal
- Casters: Hard floor
- Cushioning: High resiliency foam
- Upholstery: Medical Grade vinyl



Operator stool recommended for users above 5'6" **S M**

Specifications

- Weight: 38 lbs
- Stool Base Diameter: 23"
- Floor - Seat Height: 17.5" - 22.5"
- Back: Width 15" x Height 12"
- Seat Measurements: Width 17" Contoured

Benefits

- Full tilt adjustment allows the user to sit comfortably while working.
- Oval Backrest allows better torso maneuverability.
- Acontoured, deep seat is perfect for medium to tall users but works well with all body types.
- Superior High resiliency cushioning creates unparalleled comfort.
- Carpet or hard floor casters glide easily in any environment.
- In addition, Five-leg powder-coated aluminum base provides improved stability.

GLENWOOD C35A

Specifications

- Weight: 38 lbs
- Stool Base Diameter: 23"
- Floor Seat Height: 23" - 30"
- Seat Measurements: Width 17" Contoured

Features

- Arm: Ratchet arm adjusts vertical or horizontal
- Back: None
- Cylinder: Tall
- Foot ring: Adjustable
- Stool: Single Lever Adjustment



Assistant stool recommended for users above 5'4" **M T**

STANDARD VINYL

Color Guard



Dream
532613



Magenta
532619



Manzanita
521374



Marigold
523426



Very Berry
523027



Nasturtium
517921



Candy Apple
518767



Cerulean
532617



Neptune
517424



Grape
518775



Allspice
518760



Persimmon
518791



Berry
518761



Bluejay
518703



Marina
518784



Wood Violet
518804



Deep Clay
518771



Tomato
518800



Port
518792



Midnight Blue
518785



Blueberry
518763



Purple Iris
517919



Chocolate
518422



American Beauty
520202



Cordovan
518770



Colonial Blue
518769



Regal Blue
518705



New Purple
520053



Fudge
517922



Red Cent
518795



Burgundy
518765



Navy
517920



Royal Blue
518796



Coal
518647



Otter
518789



New Burgundy
518787



Black Plum
517421

STANDARD VINYL

Now Available in these options

					
Snow 517918	White 518802	Wheat 532614	Leapfrog 518780	Seafoam 518418	Reflection 532612
					
Lite Gray 518781	Natural 517908	Beige 518424	Grass 532618	Jade 518421	Light Teal 518420
					
Gray 517423	Saddle Tan 517730	Coffee Cream 518768	Emerald 518772	Sea Grass 518419	Aqua 532616
					
Gris 532615	Outback 518790	Camelback 518423	Vizcaya Palm 518386	Spruce 518417	Blue Nile 518762
					
Cadet 518766	Pumice 518634	Bucksuede 518636	Everglade 518773	Hunter Green 518779	Horizon Blue 518635
					
Black 517420	Tea Leaf 518799	Green Tea 518777	Harbour 518778	Slate 517701	Raintree 518794

ULTRA LEATHER

Ultraleather® | Original



291-5676 Pelican



291-0001 White



291-5805 Ermine



291-5714 Ice



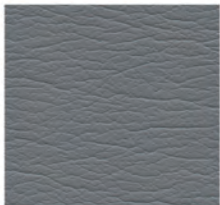
291-5668 Silver Pearl



291-5666 Dove Grey



291-5040 Elephant



291-5708 Granite



291-5763 Charcoal



291-5806 Schooner



291-5607 Raven Wing

ULTRA LEATHER



291-3720 Light Oyster



291-3455 Milkweed



291-3599 Almond



291-3700 Ivory



291-5250 Sassy



291-3601 Doe



291-3609 Buff



291-3850 Sand



291-3719 Champagne



291-8243 Apricot



291-5684 Arctic



291-3926 Cashmere



291-3851 Chamois



291-3778 Pecan



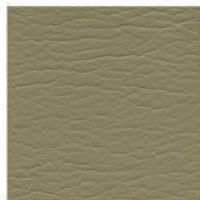
291-6588 Salmon



291-3729 Tan



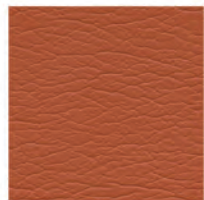
291-3183 Pine Cone



291-1256 Papyrus



291-8219 Adobe



291-8233 Autumn Leaf



291-3602 Stone



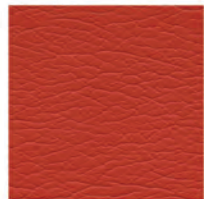
291-3523 Cave



291-3779 Taupe



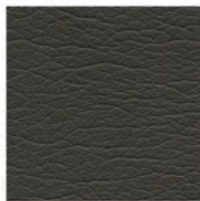
291-3612 Curry



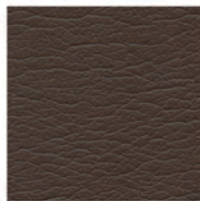
291-1347 Poppy



291-3777 Walnut



291-3666 Fudge



291-3205 Hot Chocolate



291-3610 Hide



291-1176 Red

Not recommended on the following models.
C30HS, C50ABT, C70DS, C70DL, C90SS, C90SSA, C90SB, C90SBA, Q.A.

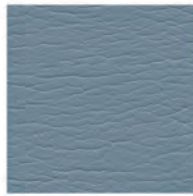
ULTRA LEATHER



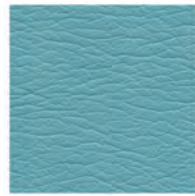
291-7213 Desert Rose



291-9380 Dusk



291-2552 Riviera



291-2527 Lagoon



291-5200 Citrus



291-1311 Brick



291-9385 Plum



291-2685 Bayou



291-2533 Cyan



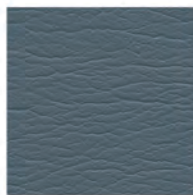
291-4460 Parrot



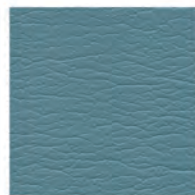
291-7214 Boysenberry



291-3469 Garnet



291-2508 Rain Dance



291-2507 St. John



291-4454 Sonora



291-6580 Sorbet



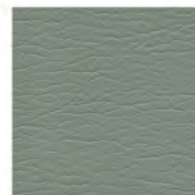
291-2551 Baltic



291-2509 Poseidon



291-4314 Herbal Mist



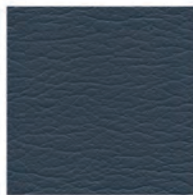
291-4430 Eucalyptus



291-1334 Toro



291-2555 Nile



291-2478 Diplomat Blue



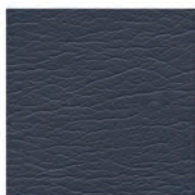
291-4351 Shetland



291-4313 Sweetgrass



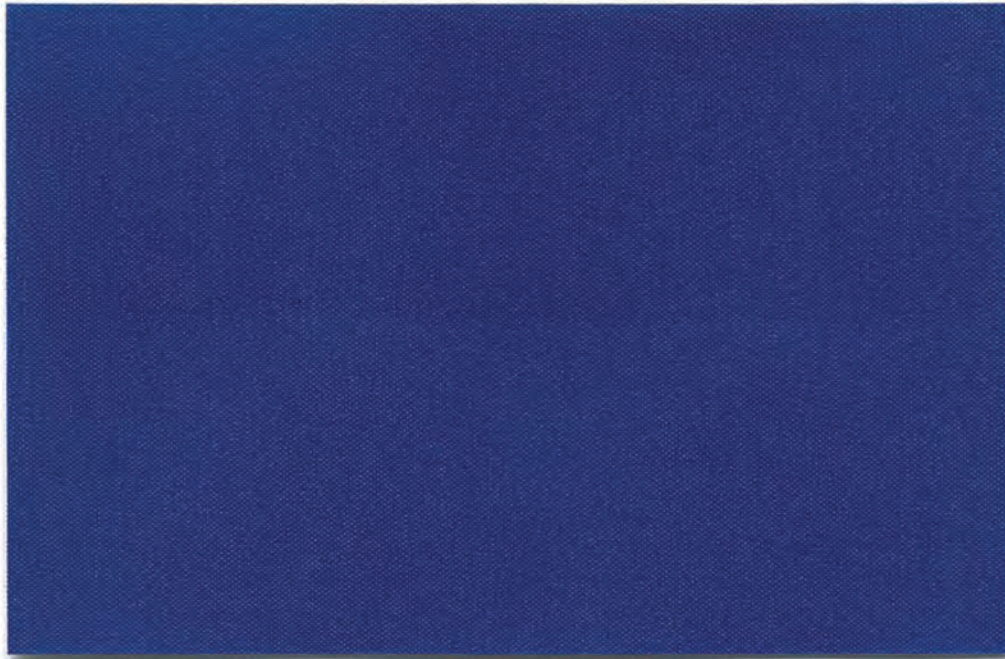
291-1312 Chianti



291-2556 Admiral

Not recommended on the following models.
C30HS, C50ABT, C70DS, C70DL, C90SS, C90SSA, C90SB, C90SBA, Q.A.

SILVERTEX VINYL



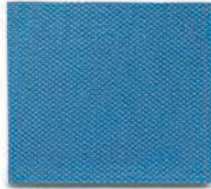
STX-8801 MARINE BLUE



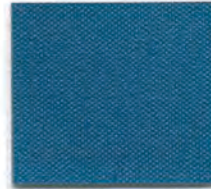
STX-8806
ICE



STX-8807
CREAM



STX-8802
LAGOON



STX-8803
TURQUOISE



STX-8839
PLATA



STX-8822
STORM



STX-8804
SAPPHIRE



STX-8805
JET



STX-8840
STERLING



STX-8830
NEUTRA



STX-8824
METEOR



STX-8823
CARBON

Silvertex is treated with the most advanced silver ion technology, SILVERGUARD®, providing a natural germ fighting defense to help safeguard the consumer against odor and stain causing bacteria. When combined with PERMABLOK3®, stain fighting and abrasion resistant treatment, also featured in Silvertex SILVERGUARD®, delivers the ultimate performance solution.

SILVERTEX VINYL



STX-8833
CRÈME DE MENTHE



STX-8834
ACID



STX-8820
BASIL



STX-8821
BOTTLE



STX-8842
LIMONCELLO



STX-8841
ZEST



STX-8819
CELERY



STX-8818
SAGE



STX-8837
BAZAAR



STX-8808
CHAMPAGNE



STX-8831
MARSH



STX-8835
PEAT



STX-8811
MANDARIN



STX-8810
CHESTNUT



STX-8832
BRONZE



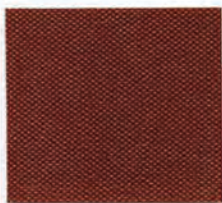
STX-8809
TAUPE



STX-8838
IMPERIAL



STX-8812
SUNKIST



STX-8814
UMBER



STX-8813
LUGGAGE



STX-8815
BORSCHT



STX-8816
RASPBERRY



STX-8817
BLACKBERRY



STX-8825
MOCHA

STA-KLEEN VINYL



snd 11
festival



snd 12
avalanche



snd 14
cider



snd 15
pale aqua



snd 16
beeswax



snd 17
cornsilk



snd 18
sage



snd 19
valentine



snd 20
oasis



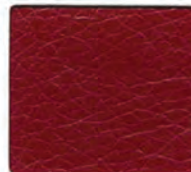
snd 21
frothe



snd 22
lucent



snd 23
herb



snd 24
sangria



snd 25
ballpoint



snd 26
yuma



snd 27
clay



snd 28
chicory



snd 29
zin



snd 30
magic



snd 31
mica



snd 32
macaroon



snd 33
arabica

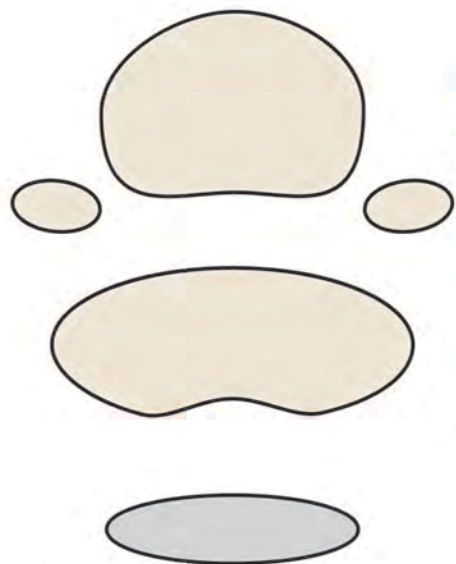


snd 34
concord



snd 35
pitch

Sta-Kleen is a long lasting "shield" that protects the surface of the upholstery from ink graffiti and other damaging stains. Stains such as ball point ink, yellow mustard and other traditionally difficult stains, are easily removed and virtually "erased" by cleaning with a dry cloth or mild soap and water.



CROWN SEATING

WORK AND LIVE IN COMFORT

CONTACT US

7300 S Tucson Way,
Centennial, CO 80112, USA

Phone: 800.417.4122 | **Fax:** 303.693.2257

Email: info@crowns seating.com

Contact your local Dealer for information and pricing!